

Simplicity, flexibility and reliability are the key features of LPReport. Typical functionalities of the expensive AMR (Automatic Meter Reading) systems now available in the most cost effective product.

## Main features

- ✓ Manual or automatic (scheduled) meter reading
- ✓ Tabular or graphical data presentation
- ✓ On the fly load profile analysis and TOU distribution
- ✓ Selectable integrating period (15 min, 1 hour, 1 day, 1 month)
- ✓ Data export in XLS, TXT, RTF format
- ✓ Graphs export in BMP, EMF, WMF format
- ✓ Custom XLS worksheets creation using customer's defined templates
- ✓ Customizable tariff structures
- ✓ Data archiving on Access or SQL Server database
- ✓ Load profiles validation
- ✓ Bill-book management of periodical testing of meters
- ✓ SAP EDM data import and export

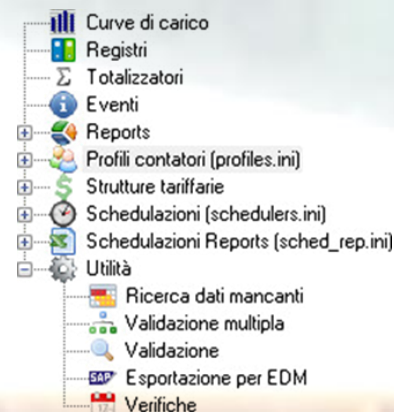


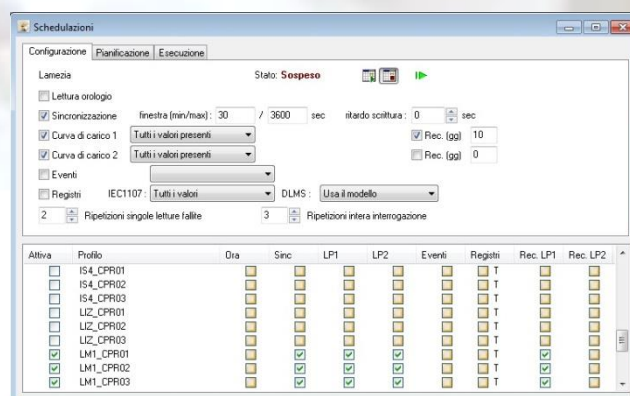
Tabella dati

Data (fine periodo)	Stato	A+ (kWh)	Q1 (kvarh)	Q4 (kvarh)	A- (kWh)	Q2 (kvarh)	Q3 (kvarh)
01/06/2012 05:30		0.23	0.00	0.92	0.00	0.00	0.00
01/06/2012 05:45		0.46	0.00	2.19	0.00	0.00	0.23
01/06/2012 06:00		0.12	0.00	0.46	0.81	0.00	2.19
01/06/2012 06:15		0.00	0.00	0.00	4.83	0.00	3.57
01/06/2012 06:30		0.00	0.00	0.00	8.97	0.00	4.60
01/06/2012 06:45		0.00	0.00	0.00	13.23	0.00	2.76
01/06/2012 07:00		0.00	0.00	0.00	16.79	0.00	0.81
01/06/2012 07:15		0.00	0.00	0.00	20.70	0.00	0.35
01/06/2012 07:30		0.00	0.00	0.00	27.37	0.46	0.00
01/06/2012 07:45		0.00	0.00	0.00	32.66	0.92	0.00
01/06/2012 08:00		0.00	0.00	0.00	38.30	1.38	0.00
01/06/2012 08:15		0.00	0.00	0.00	45.54	2.07	0.00
01/06/2012 08:30		0.00	0.00	0.00	56.46	3.45	0.00
01/06/2012 08:45		0.00	0.00	0.00	59.34	3.80	0.00
01/06/2012 09:00		0.00	0.00	0.00	74.40	5.29	0.00
01/06/2012 09:15		0.00	0.00	0.00	77.74	5.64	0.00
01/06/2012 09:30		0.00	0.00	0.00	85.22	6.44	0.00
01/06/2012 09:45		0.00	0.00	0.00	88.32	6.56	0.00
01/06/2012 10:00		0.00	0.00	0.00	96.49	7.36	0.00
01/06/2012 10:15		0.00	0.00	0.00	101.43	7.82	0.00
01/06/2012 10:30		0.00	0.00	0.00	115.58	9.32	0.00
01/06/2012 10:45		0.00	0.00	0.00	121.90	9.89	0.00
01/06/2012 11:00		0.00	0.00	0.00	128.34	10.58	0.00
01/06/2012 11:15		0.00	0.00	0.00	121.33	9.89	0.00
01/06/2012 11:30		0.00	0.00	0.00	127.65	10.58	0.00
01/06/2012 11:45		0.00	0.00	0.00	138.46	11.62	0.00
01/06/2012 12:00		0.00	0.00	0.00	136.51	11.39	0.00
01/06/2012 12:15		0.00	0.00	0.00	141.57	12.08	0.00

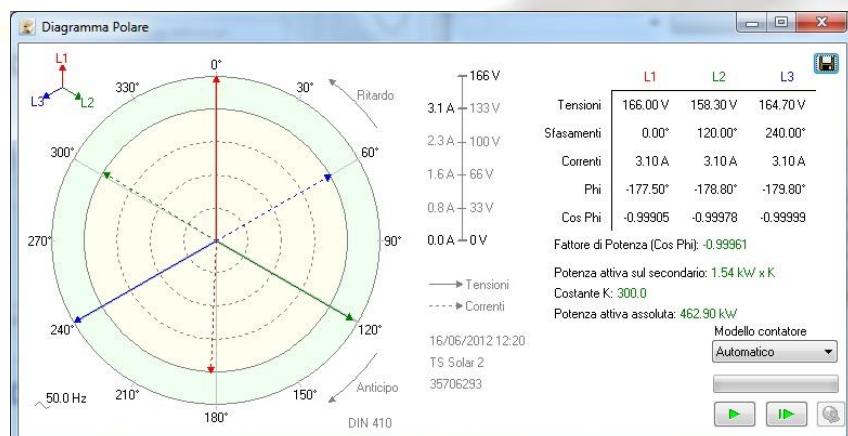
## Remote meter reading

LPReport handles the communications through

- ❖ Optical probes
- ❖ Modems (PSTN / ISDN / GSM )
- ❖ RS232 / RS485 / CS
- ❖ LAN / Internet



## Vector diagram for electricity meters



You can remotely monitor the proper functioning of the meters



## Ritiro dedicato GSE

LPReport is able to produce the monthly XML files that the utilities have to send to the GSE company

## Scalable

LPReport is the scalable AMR system ideal for small / medium companies. It gives you functionality usually available only on the biggest AMR systems at an extremely competitive price.

## Multivendor

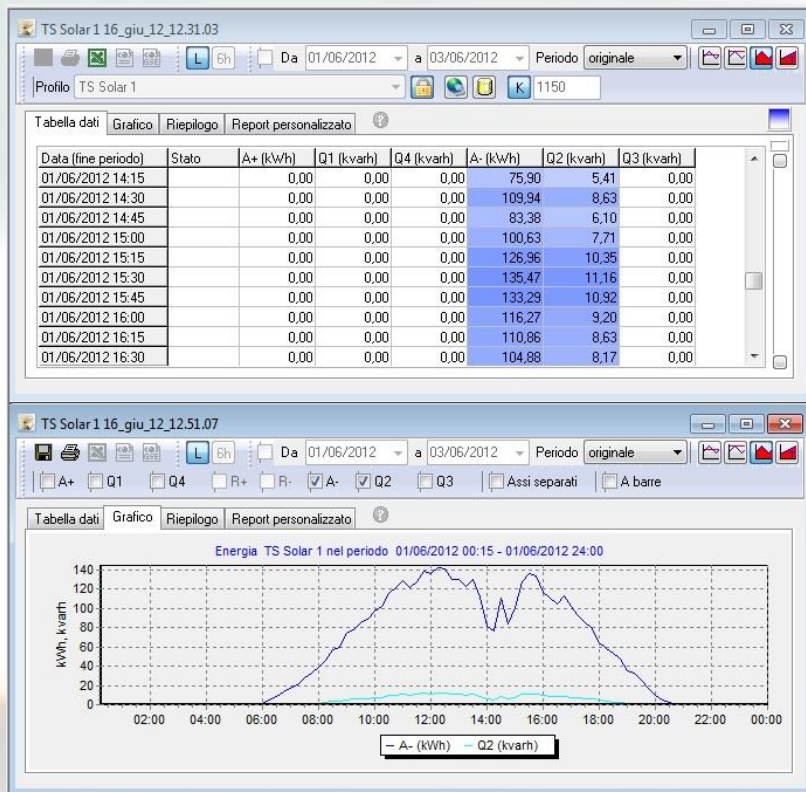
LPReport supports the following meters:

- ✓ Iskraemeco (all the models)
- ✓ Actaris/Itron SL7000 e DC3
- ✓ Landis+Gyr ZMD
- ✓ Siemens 7ED62
- ✓ CEWE Prometer R and W
- ✓ Elster A1700
- ✓ EMH LZQJ-XC
- ✓ DPEE TH40
- ✓ Gas meters using the SNAM protocol

Imports and manages TXT files from

- ✓ Görlitz ENZ 2000
- ✓ SAP EDM

Imports and exports data from Iskraemeco SEP2W system



## User defined tariff structures

Define your own tariff structure  
"painting the hours" with the mouse

## "One click" exporting in Excel

LPReport lets you define custom templates to automatically export data on XLS worksheets.



With a single mouse click you can create XLS worksheets made of multiple sheet whose content (data, positionings, colours, fonts, images, ..) is freely customizable.

## Communication protocols



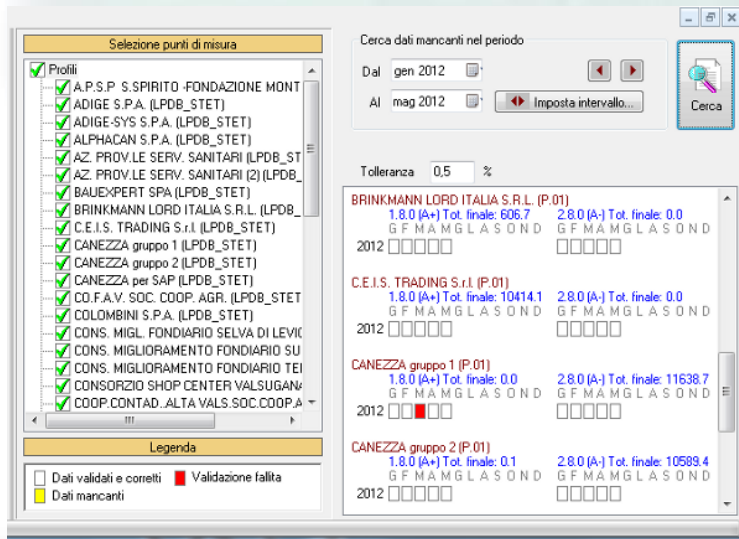
SCTM



IEC62056-21

Modbus





## Validation of monthly load profiles

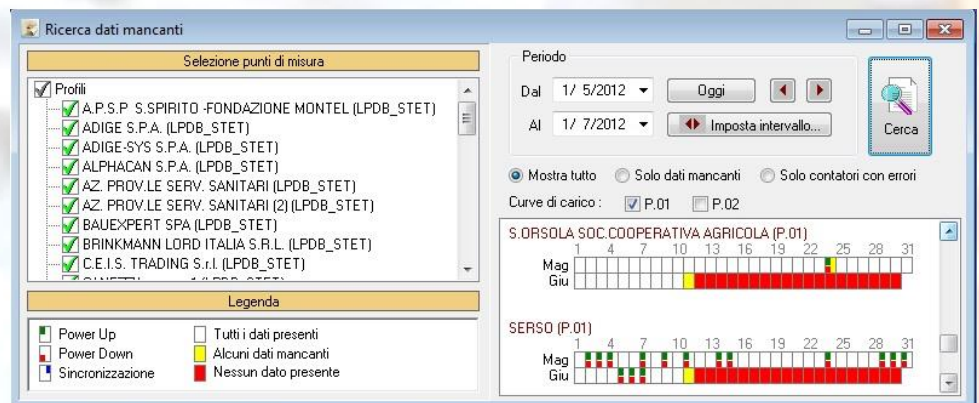
LPReport can validate the consistency between the starting and ending monthly cumulative registers and the sum of the monthly load profile recordings.



Moreover:

- ✓ special communication monitoring database for easy statistical analysis of the communication media performance
- ✓ support of dataloggers to read the devices equipped of pulse outputs
- ✓ load profiles import from Excel
- ✓ scheduled production of advanced XLS reports
- ✓ automatic management of "Agenzia delle Dogane" registry with daily meter readings

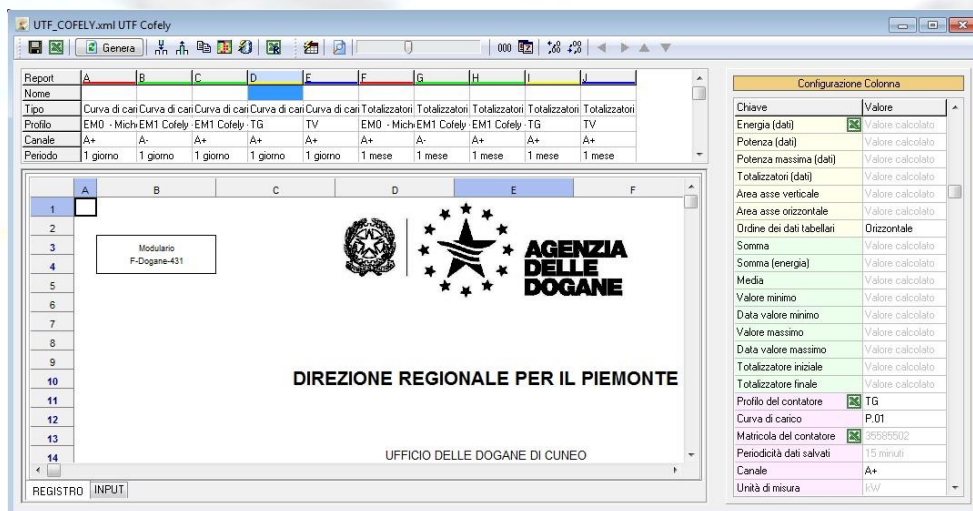
## Database survey for missing data control



## Advanced reporting

Unparalleled flexibility for automatic reporting in Excel worksheets:

Completely customizable



Advanced report example for automatic management of the "Agenzia delle Dogane" monthly registry



Da 01/09/2011 a 01/06/2012 Perodo 1 mese

☒ A+ ☒ A- ☐ R+ ☐ R- ☐ Q1 ☐ Q2 ☐ Q3 ☐ Q4

Tabella dati

Mese	A+ (kWh)	A- (kWh)	Q1 (kvarh)	Q2 (kvarh)	Q3 (kvarh)	Q4 (kvarh)
Settembre 2011	0,75870	775,23490	0,20240	48,52670	8,14570	3,49380
Ottobre 2011	0,81340	835,23600	0,21990	52,53700	9,07560	3,76740
Novembre 2011	0,88170	862,56270	0,23940	53,78330	10,44790	4,10500
Dicembre 2011	0,94920	885,39460	0,26060	54,70000	11,89020	4,44120
Gennaio 2012	1,02360	914,22020	0,28010	55,96240	13,18630	4,77230
Febbraio 2012	1,31200	937,06750	0,29810	57,41340	13,73470	6,00810
Marzo 2012	1,36740	1.015,25790	0,31210	62,92750	14,44280	6,22240
Aprile 2012	1,43010	1.094,22960	0,32440	68,27860	15,54600	6,48390
Maggio 2012	1,50080	1.208,83650	0,33540	76,72980	16,50620	6,77840

**Monthly or daily archiving  
of the cumulative energy  
registers**

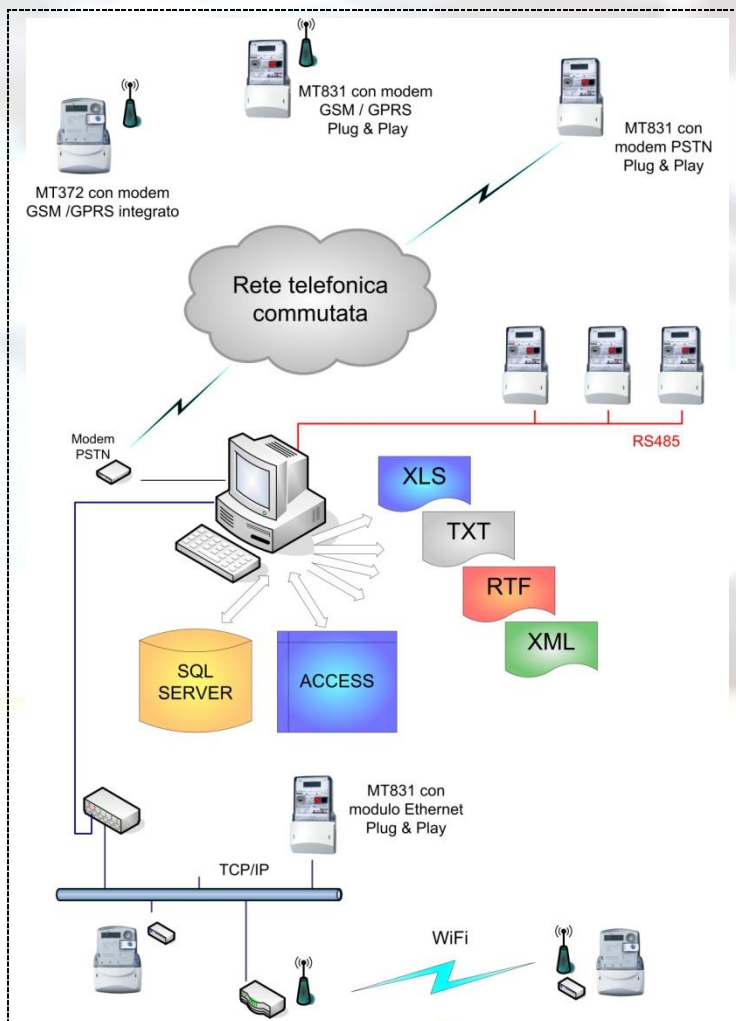
**Bill-book of  
periodical  
meter's  
calibration  
control**

Da inizio 01/06/2012 a fine 01/07/2012

☐ Scaduti ☐ Non soggetto a verifica

Verifiche

Contatore	Matricola	Periodo	Soggetto Verif.	Ultima Verifica	Prox Verifica	Scaduta
MT860 - 1AU	41508285	36 Mesi	SI	09/08/2011	09/08/2014	NO
MT860 - 2AU	41508307	36 Mesi	SI	09/11/2011	09/11/2014	NO
MT860 - TGA	41508272	36 Mesi	SI	09/08/2011	09/08/2014	NO
MT860 - TGC	41508306	36 Mesi	SI	09/11/2011	09/11/2014	NO
MT860 - TV1	41508283	36 Mesi	SI	09/08/2011	09/08/2014	NO
MT860 - TV2	41508305	36 Mesi	SI	09/11/2011	09/11/2014	NO



- ✓ **360° communication**
- ✓ **Simplicity of use**
- ✓ **Maximum flexibility**

**Data Loggers reading**



**Multiutility**

*(electricity, water, gas, compressed air,  
heating and cooling, ...)*

