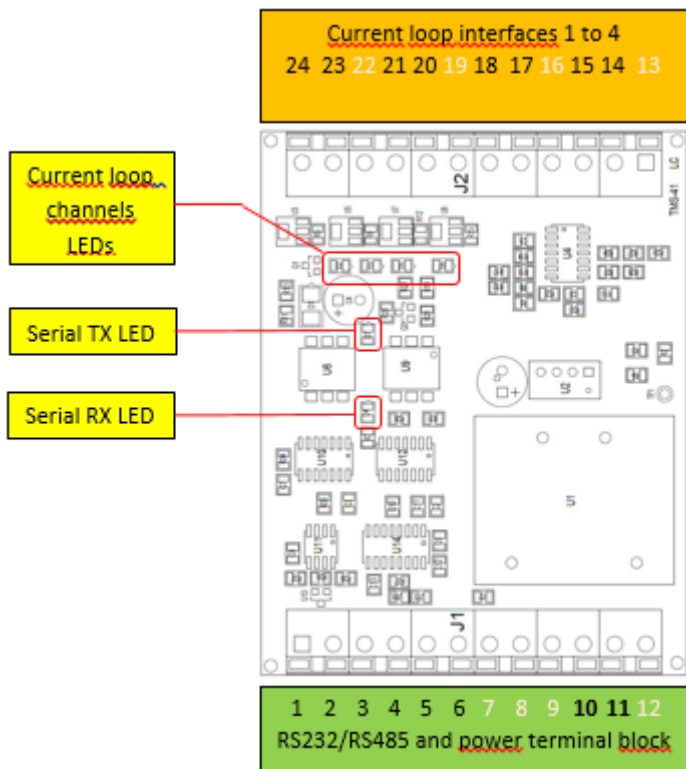


CS4HUB

RS232-RS485 to 20 mA Current Loop converter

CS4HUB is a RS232/RS485 to active Current Loop (4-channels, 2-wire) transparent converter.

- The converter is fully transparent and does not require any configuration
- Up to 4 meters with passive CS can be connected to each one of the 4 active CS interfaces



Technical specification

Power Requirements

Input voltage 85-370 VDc, or 85-265 VAc

Active CS

Number of channels 4
 Max. passive devices per channel 4
 Max. length of each CS loop 1000 mt
 Baud rate 9600 bps

RS232

Serial signals TxD, RxD, GND
 Max. cable length 25 mt
 Baud rate 9600 bps

RS485

Serial signals A, B, GND
 ESD protection +-15KV IEC1000-4-2 air
 +-8KV IEC1000-4-2 direct contact
 Isolation 1000Vdc
 Baud rate 9600 bps
 Max. cable length 1200 mt

Mechanical

Housing plastic
 Mounting DIN rail
 Dimensions 4 DIN modules, height 60mm
 Weight 120g.

Environmental

Protection rating IP20
 Operating Temperature -10 to +50 °C
 Ambient Relative Humidity < 90% (non condensing)

Terminal blocks

Power supply		Position
	L	10
	N	11

Interfaces	Signal	Position
RS485		
	A	1
	B	2
	GND	3
RS232		
	RxD	4
	TxD	5
	GND	6
Active CS		
	CS+ channel 1	24
	CS- channel 1	18
	CS+ channel 2	23
	CS- channel 2	17
	CS+ channel 3	21
	CS- channel 3	15
	CS+ channel 4	20
	CS- channel 4	14



Warning

Unused CS channels must be shorted out

Connecting CS4HUB to Indubox modem

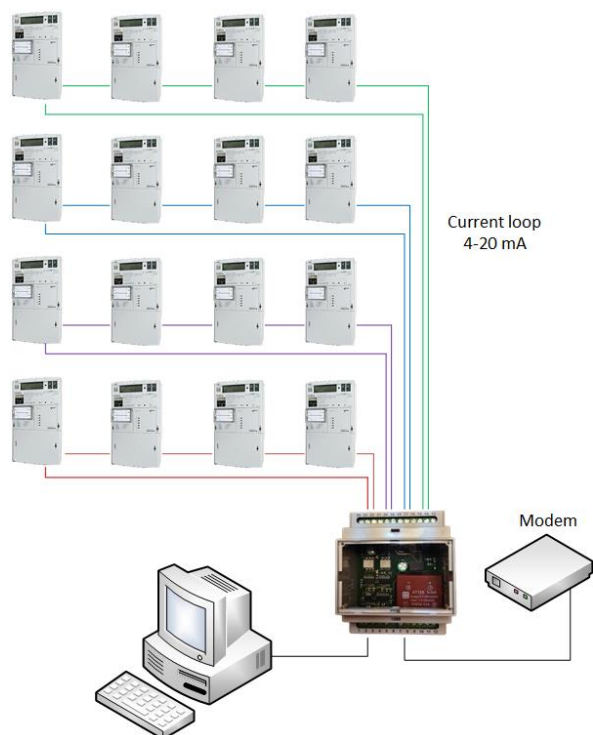
CS4HUB INDUBOX PSTN/GSM (RJ45)

RS232

RxD	4	↔	4	RX
TxD	5	↔	5	TX
GND	6	↔	6	GND

RS485

A	1	↔	5	A
B	2	↔	7	B



Connecting CS4HUB to a PC or other DTE device

CS4HUB PC RS232, DE9-M

RS232

RxD	4	↔	3	TX
TxD	5	↔	2	RX
GND	6	↔	5	GND